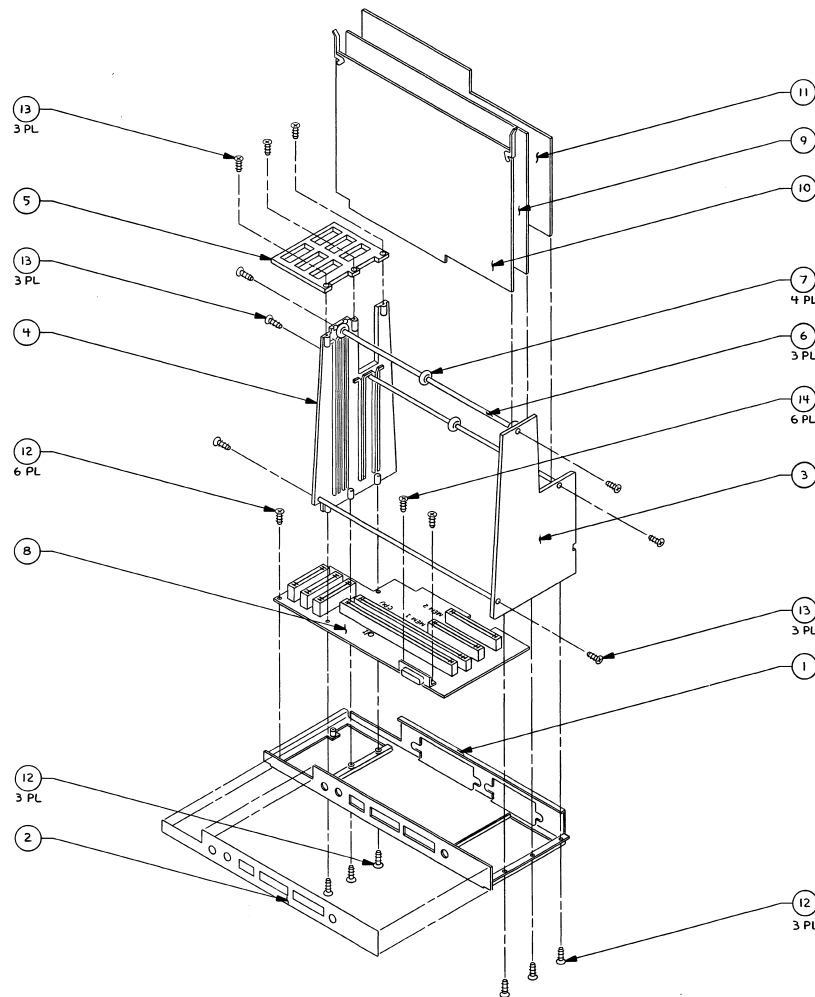


NOTE: UNLESS OTHERWISE SPECIFIED

REV	ZONE	ECO	+	REVISION	APPRO	DATE
A	1	342		INITIAL RELEASE		



SEE SEPARATE BILL OF MATERIAL 620-5132

METRIC DIMENSIONS IN MILLIMETERS DECIMALS FRACTIONS		apple computer inc. NOTICE OF PROPRIETARY PROPERTY THE INFORMATION CONTAINED HEREIN IS THE PROPRIETARY PROPERTY OF APPLE COMPUTER, INC. THE PROPRIETOR HEREBY DISCLAIMS ANY LIABILITY IN CONNECTION WITH THE INFORMATION CONTAINED HEREIN. NOT TO BE REPRODUCED OR TRANSMITTED IN ANY FORM OR BY ANY MEANS, ELECTRONIC OR MECHANICAL, INCLUDING PHOTOCOPYING, RECORDING, OR BY ANY INFORMATION STORAGE AND RETRIEVAL SYSTEM, WITHOUT PERMISSION IN WRITING FROM APPLE COMPUTER, INC.	
DESIGNED BY: R. J. J. / 8/83 CHECKED BY: J. J. J. / 8/83 DRAWN BY: J. J. J. / 8/83 REVISED BY: J. J. J. / 8/83	DATE: 8/83 TIME: 10:00 PROJECT: LISA PART: 620-5132-A	SUBASSY. CARD CAGE. LISA 2.0 1/4 X 1/1	

620-5132-A